

SELECTIVE HERBICIDE

SURMISE®

SPEEDPRO™ XT

FAST-ACTING WEED CONTROL WITH EXTENDED RESIDUAL.



With **Surmise® SpeedPro™ XT**, you can harness the power of three modes of action and at least three months of control. **Surmise SpeedPro XT** combines the broad-spectrum power of glufosinate and enhanced speed of pelargonic acid with the long-lasting control of imazethapyr. This powerful trifecta provides quick knockdown and superb non-selective control of annual and perennial weeds – broadleaf, grass and sedges – with outstanding residual.

Surmise SpeedPro XT is an excellent alternative to glyphosate herbicides. You get speed-of-control, a lower usage rate per acre, and excellent systemic control – an ideal solution for weed management along driveways, parking lots, right-of-way areas, fence rows, and a variety of other non-crop areas.

Do not use Surmise SpeedPro XT on desirable foliage or young plants, fruit or vegetable plants, in lawns or for lawn renovations, or in areas that will be planted or seeded within three months.

PRODUCT FEATURES

- Quick knockdown, excellent systemic control.
- Residual control for at least 3 months.
- Provides control of a wide variety of emerged annual and perennial broadleaf weeds, grasses and sedges.

LABELED USES

- | | | |
|------------------------|-----------------|---------------------------------------|
| • Driveways | • Mulched areas | • Industrial areas |
| • Patios and sidewalks | • Rights-of-way | • Fence rows and other non-crop sites |
| • Paved areas | • Cart paths | |
| • Playgrounds | • Hardscapes | |

See label for complete application guidelines and restrictions.

ACTIVE INGREDIENTS

10.0% glufosinate-ammonium
11.08% ammonium-nonanoate
3.18% imazethapyr-ammonium

HRAC GROUPS

Glufosinate – 10
Pelargonic acid – 27
Imazethapyr – 2

FORMULATION

Soluble liquid concentrate

CHEMICAL FAMILY

Phosphinic acid, fatty acid,
imidazolinone

COMPARE TO

Proprietary formulation

MODE OF ACTION

Glutamine synthase inhibitor,
HPPD inhibitor and ALS inhibitor

RESTRICTED USE

No

SIGNAL WORD

Warning

PACKAGING

12 x 1 qt, 4 x 1 gal, 2 x 2.5 gal

EPA REG NUMBER

45002-32-89442

SURMISE[®] SPEEDPRO[™] XT

FAST-ACTING WEED CONTROL WITH EXTENDED RESIDUAL

SURMISE[®] SPEEDPRO[™] XT vs. RM43[®] initial application July 13, 2020 • Selma, NC

7 DAYS AFTER TREATMENT



Surmise SpeedPro XT
@ 6.4 fl oz/1000 sq ft



RM43
@ 7.4 fl oz/1000 sq ft

28 DAYS AFTER TREATMENT



Surmise SpeedPro XT
@ 6.4 fl oz/1000 sq ft



RM43
@ 7.4 fl oz/1000 sq ft

42 DAYS AFTER TREATMENT

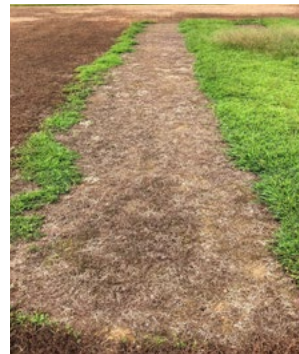


Surmise SpeedPro XT
@ 6.4 fl oz/1000 sq ft



RM43
@ 7.4 fl oz/1000 sq ft

84 DAYS AFTER TREATMENT



Surmise SpeedPro XT
@ 6.4 fl oz/1000 sq ft



RM43
@ 7.4 fl oz/1000 sq ft



◀ See label for complete application guidelines and restrictions.

©2023 Albaugh, LLC. Albaugh, the A logo, and Surmise are registered trademarks and SpeedPro XT is a trademark of Albaugh, LLC. RM43 is a registered trademark of Tangi-Pac, LLC. Always read and follow label restrictions, precautions, and directions for use. This product may not be registered for sale or use in all states or counties. Please check with your state agency responsible for pesticide registration to ensure registration status.